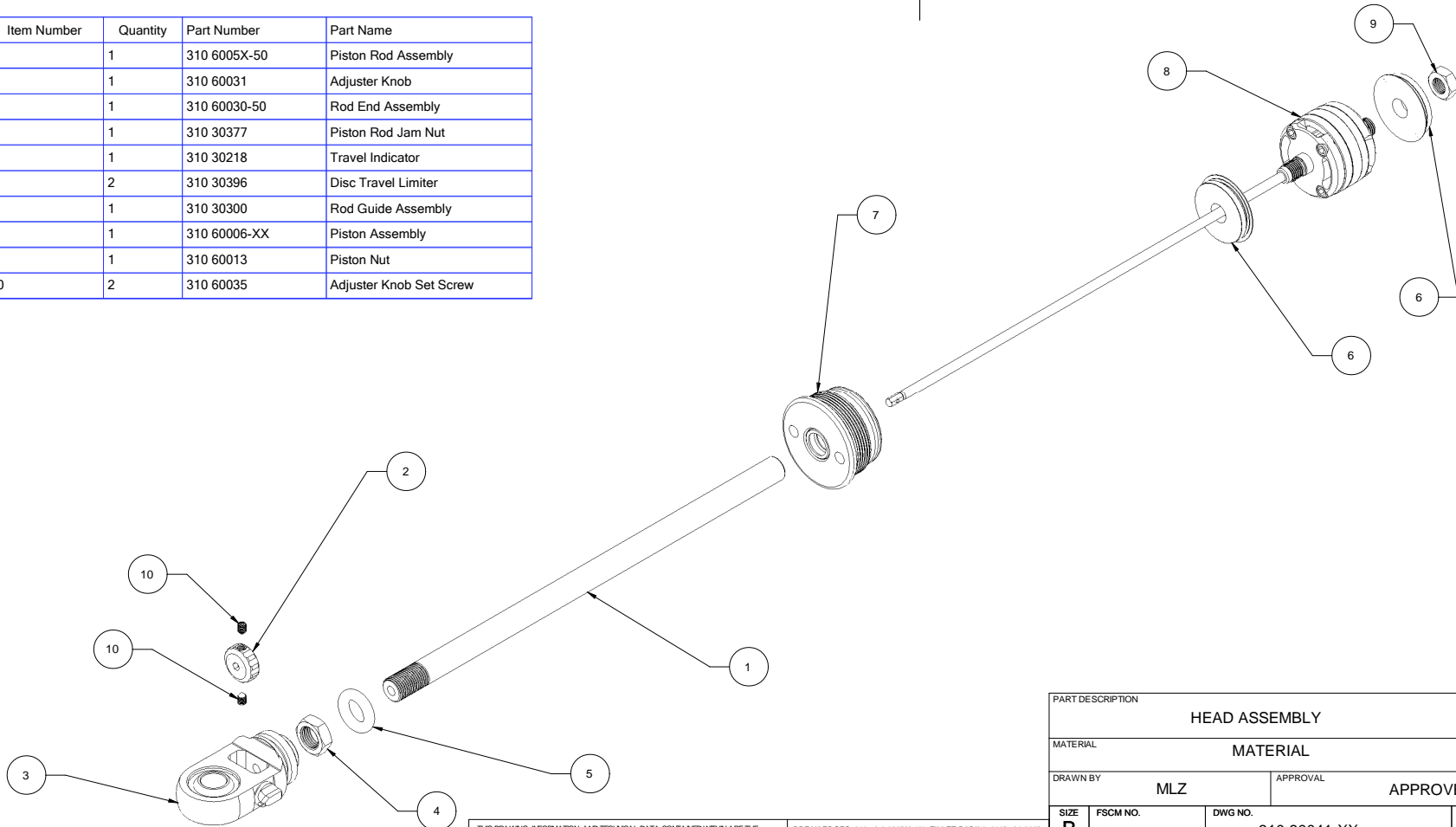




Item Number	Quantity	Part Number	Part Name
1	1	310 6005X-50	Piston Rod Assembly
2	1	310 60031	Adjuster Knob
3	1	310 60030-50	Rod End Assembly
4	1	310 30377	Piston Rod Jam Nut
5	1	310 30218	Travel Indicator
6	2	310 30396	Disc Travel Limiter
7	1	310 30300	Rod Guide Assembly
8	1	310 60006-XX	Piston Assembly
9	1	310 60013	Piston Nut
10	2	310 60035	Adjuster Knob Set Screw

REVISIONS				
ZONE	REV	DESCRIPTION	DATE	APPROVED
	A	RELEASED	19-MAY-2009	



PART DESCRIPTION			
HEAD ASSEMBLY			
MATERIAL			
DRAWN BY		APPROVAL	
MLZ		APPROVER	
SIZE	FSCM NO.	DWG NO.	REV
B		310 60041-XX	A
SCALE	1" = 2"		SHEET

THIS DRAWING, INFORMATION, AND TECHNICAL DATA CONTAINED WITHIN ARE THE EXCLUSIVE PROPERTY OF INTEGRA RACING SHOCKS AND SHALL BE RETURNED UPON REQUEST. THIS DRAWING IS NOT TO BE REPRODUCED IN WHOLE OR IN PART, NOR SHALL ANY INFORMATION OR TECHNICAL DATA BE SUPPLIED IN ANY FORM TO ANYONE ELSE WITHOUT THE EXPRESS WRITTEN CONSENT OF INTEGRA RACING SHOCKS

BREAK EDGES .010  $\pm$  .0005" X 45°; FILLET RADII 0.010"  $\pm$  0.005"  
 TOLERANCES (UNLESS OTHERWISE SPECIFIED):  
 .XX  $\pm$  .01", .XXX  $\pm$  .003", ANG  $\pm$  0.5°  
 ALL SURFACE FINISHES TO BE Ra 64 OR BETTER UNLESS OTHERWISE SPECIFIED.

310 60041-XX\_HEAD ASSEMBLY